

0080SSMX

# SAILING WITHOUT A SAIL (A.K.A. TRAIL TO YOUR HEART)



Album Cover Art © 1978 EMI America Records Inc.

Words and Music by BILL LaBOUNTY and RAY FREELAND

Recorded by MICHAEL JOHNSON on EMI/AMERICA RECORDS

CAPTAIN CRYSTAL MUSIC \$1.75

  
Columbia Pictures Publications  
16333 N.W. 54th Ave., Hialeah, Florida 33014

# SAILING WITHOUT A SAIL

(A.K.A. Trail To Your Heart)

Words and Music by  
BILL LABOUNTY and  
ROY FREELAND

Moderate Rock Tempo

The piano introduction consists of two systems of music. The first system shows a treble clef staff with a whole rest and a bass clef staff with a melodic line. The second system shows a grand staff with a treble clef staff containing chords and a bass clef staff with a melodic line. A dynamic marking of *mf* is present.

Abmaj7

A guitar chord diagram for Abmaj7, showing the fretting for the Ab major triad with a seventh.

In the dark \_\_\_\_\_ of the night \_\_\_\_\_  
\_\_\_\_\_ in your touch \_\_\_\_\_

The piano accompaniment for the first vocal line. The treble clef staff contains chords and melodic fragments, while the bass clef staff continues the melodic line. A dynamic marking of *mf* is present.

A guitar chord diagram for Fm7.

A guitar chord diagram for Cm7.

A guitar chord diagram for Bb.

\_\_\_\_\_ some - thing ma - gic, \_\_\_\_\_ in the words \_\_\_\_\_  
\_\_\_\_\_ when we're danc - in', \_\_\_\_\_ and the stars \_\_\_\_\_

The piano accompaniment for the second vocal line. The treble clef staff contains chords and melodic fragments, while the bass clef staff continues the melodic line. A dynamic marking of *mf* is present. A triplet of eighth notes is marked with a '3'.



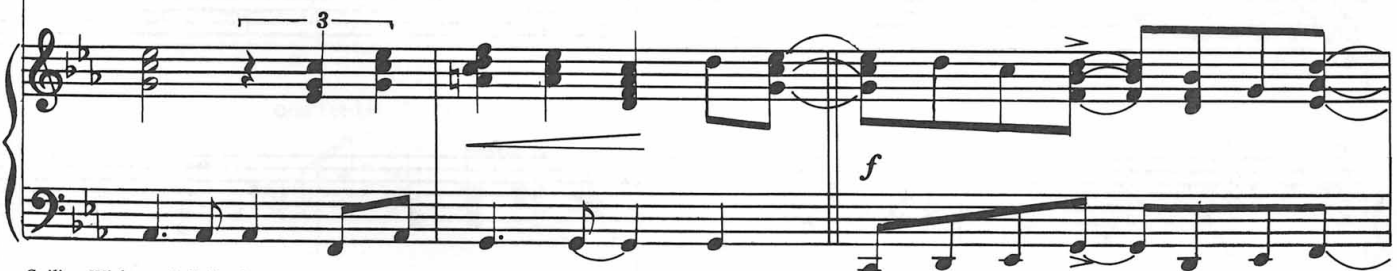
that you breathe in my ear;  
in your eye seem to say,



1. 2. I let the high way un-wind, get me  
don't care where we go, take me



lost, get me blind. } Take me sail - ing with - out an - y sail;  
fast, take me slow. }





Musical notation for the first system, including a treble clef staff with a triplet of eighth notes and a piano accompaniment.

roll - ing with - out an - y rail;

Piano accompaniment for the first system, showing the left and right hands.



Musical notation for the second system, including a treble clef staff and piano accompaniment.

trav - el - in' on a mys - ter - i - ous trail with you.

Piano accompaniment for the second system, showing the left and right hands.



To Coda on 3rd time

1.



Musical notation for the third system, including a treble clef staff with a repeat sign and first ending.

2. There's a spark

Piano accompaniment for the third system, showing the left and right hands.

C7sus (add 9)



A7sus (add 9)



C7sus (add 9)



D7sus (add 9)



Musical notation for the fourth system, including a treble clef staff with sustained chords.

Piano accompaniment for the fourth system, showing the left and right hands.

F7sus (add 9)

G7sus (add 9)

Bb7sus (add 9)

C7sus (add 9)

*D.S. al Coda* 

I don't care\_

 *Coda*

Cm7

Cm7

Ab

Bb6

Take me sail - in',

take me

Cm7

Ab

Bb6

Cm7

Gm7

roll - in',

take me trav - el - in' on a mys - ter -

Abmaj7

Gm7+5

Cm7

*repeat and fade*

- i - ous trail\_ with you. \_\_\_\_\_

Take me